

STADIO



HIGHER EDUCATION

1 RPL FOR ACCESS

01 ATTENTION EXPERIENCED INDIVIDUALS!

Are you experienced in a field and interested in studying for a qualification to help you climb your career-ladder but you do not have access to Higher Education? STADIO has the perfect solution for you – Recognition of Prior Learning (RPL) for Access!



02 WHAT IS RPL FOR ACCESS?

It's a process that recognises your prior learning and relevant experiences that you gained before engaging in formal studies. If you have sufficient relevant prior knowledge and skills, you may be accepted into Higher Education programme at STADIO.



03 WONDERING IF YOU QUALIFY FOR RPL?

Do you have sufficient working experiences in a field relevant to the qualification you want to acquire? Or do you have an incomplete qualification or a QCTO qualification in a field relevant to the qualification? If you answered yes to any of the above questions, you are eligible to apply for RPL, which could provide you access to this qualification.



04 BUT HOW DO YOU APPLY FOR RPL?

But how do you apply for RPL? Go to the STADIO website and complete the application form. Don't forget to upload your detailed Curriculum Vitae, a brief outline of your formal and informal learning, a brief outline of your work experience, and proof of payment of the RPL administration fee.



STADIO



HIGHER EDUCATION

2 RPL FOR ACCESS

05 HERE'S THE DEAL

RPL is a lengthy process that could take up to 6 weeks from application to outcome. But, don't worry we've got your back! Our programme information, whether on the website or in print, contains a reference to the RPL for the access process. Each programme has its own distinct set of Recognition of Prior Learning (RPL) requirements tailored specifically to the programme's needs. There will be specific evidence that is required, which may include writing tests, portfolios of evidence, or personal interviews or presentations.



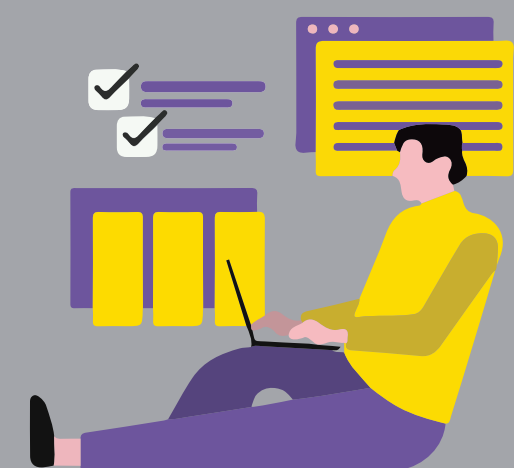
06 HERE'S THE PROCESS

Our RPL adviser will communicate the requirements to you, and depending on the programme, they may advise you on further requirements. The RPL adviser will collate all the information received from you and the programme coordinator will then make an admission decision.



07 THE OUTCOME

If you are successful, an offer letter will be sent to you from the system. You'll be able to accept the offer and proceed to enrol via the system. If your application is unsuccessful, the RPL adviser will contact you to provide feedback on the reasons for the finding and to discuss further options.



08 WHAT ARE YOU WAITING FOR?

Apply for the RPL for access today and fast-track your career with STADIO! Are you experienced in a field and interested in studying for a qualification to help you climb your career-ladder but you do not have access to Higher Education? STADIO has the perfect solution for you – Recognition of Prior Learning (RPL) for Access!

